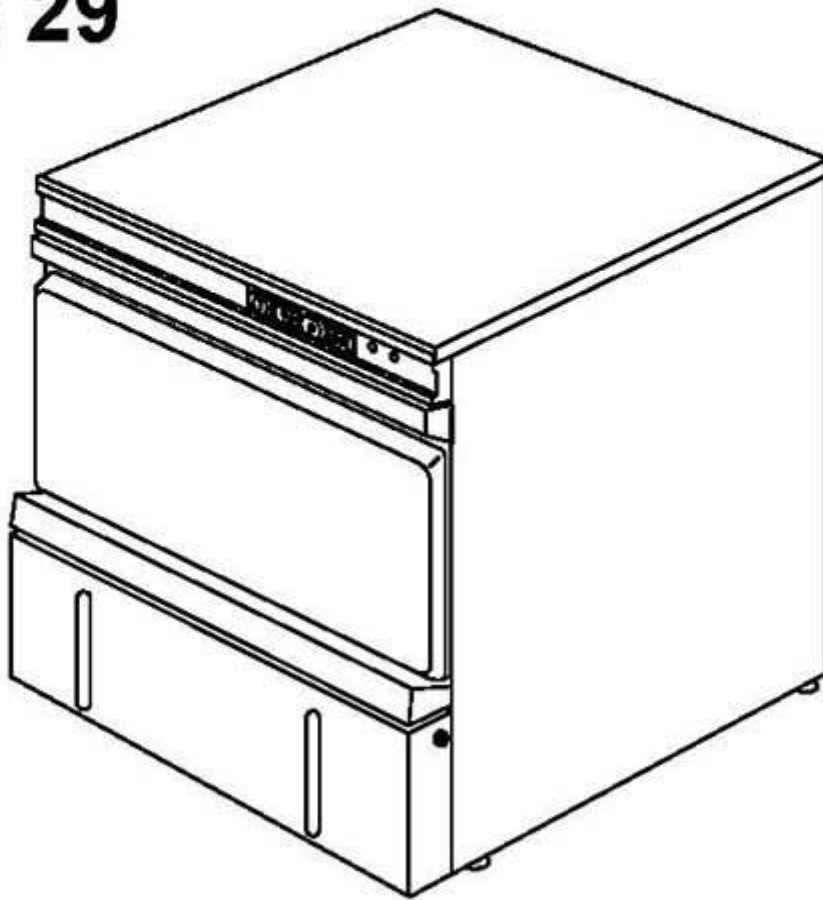


winterhalter

Spare parts list GS 29



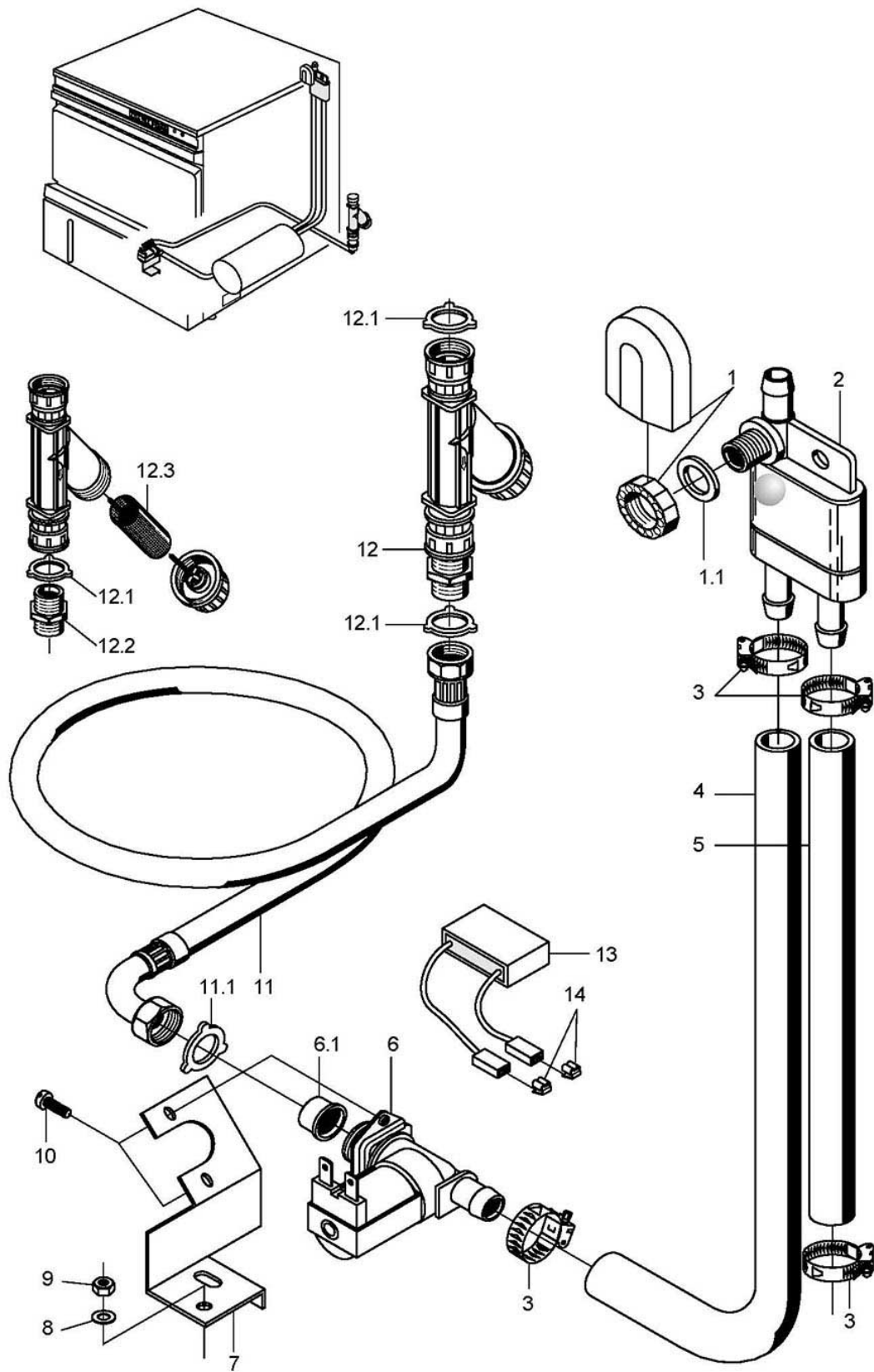
Drawn up: 10/93

Processed: 28.07.08

Parts no.: 89000968

Contents

Water inlet	Page 1 - 2
Water inlet (Tundish GB)	Page 3 - 4
Tank heating and water drain	Page 5 - 6
Wash system I	Page 7 - 8
Wash system II	Page 9 - 10
Rinse I (pressure boiler)	Page 11 - 12
Rinse I (AquaMatik)	Page 13 - 14
Rinse II to machine no.: 223 460	Page 15 - 16
Rinse II From machine no.: 223 461 to machine no.: 396 847	Page 17 - 18
Rinse II From machine no.: 396 848	Page 19 - 20
Dosage	Page 21 - 22
Chassis, container and panelling	Page 23 - 24
Door	Page 25 - 26
Electrical parts I	Page 27 - 28
Electrical parts II	Page 29 - 30
Drain pump (optional)	Page 31 - 32

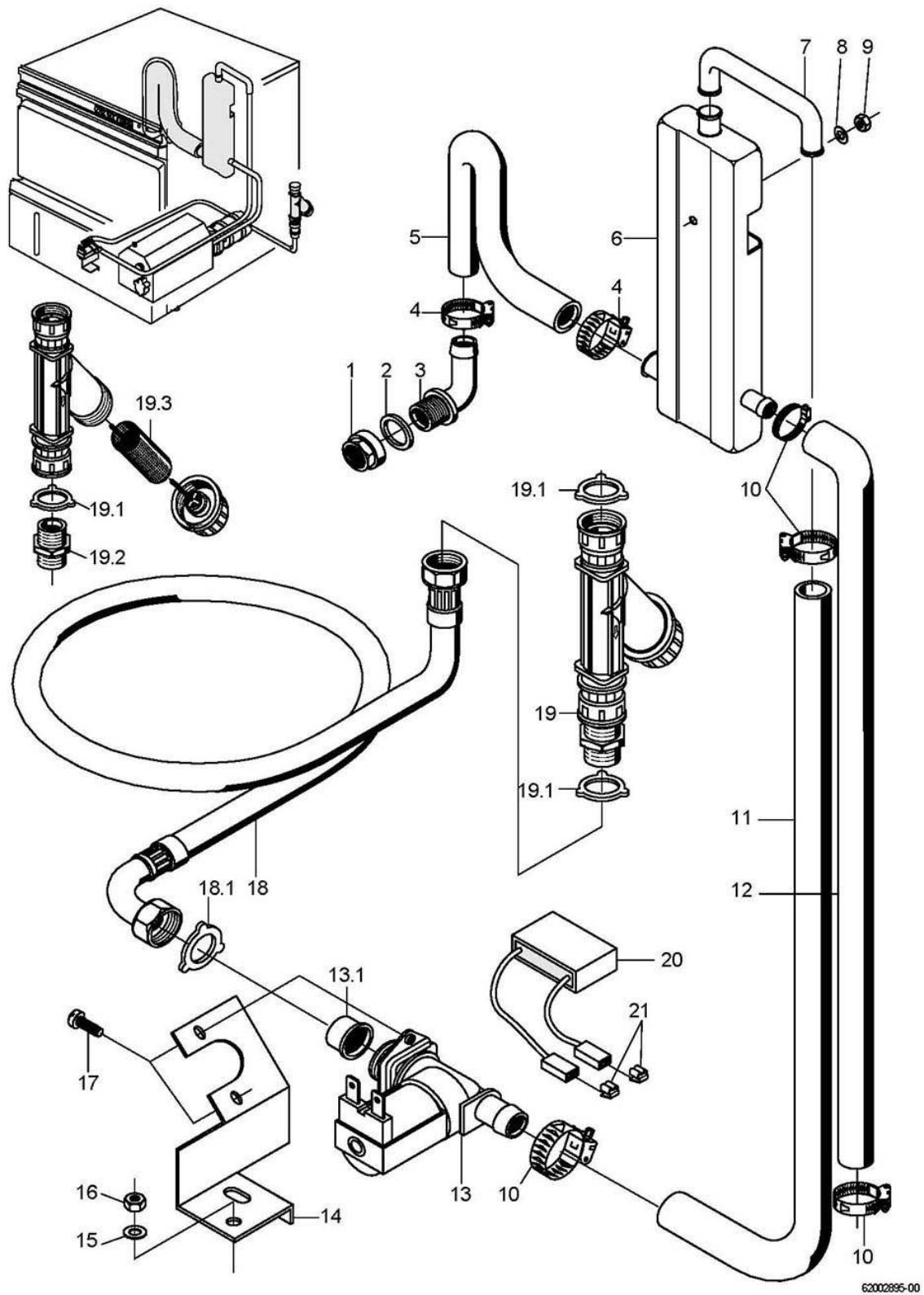


62002894-00

GS 29

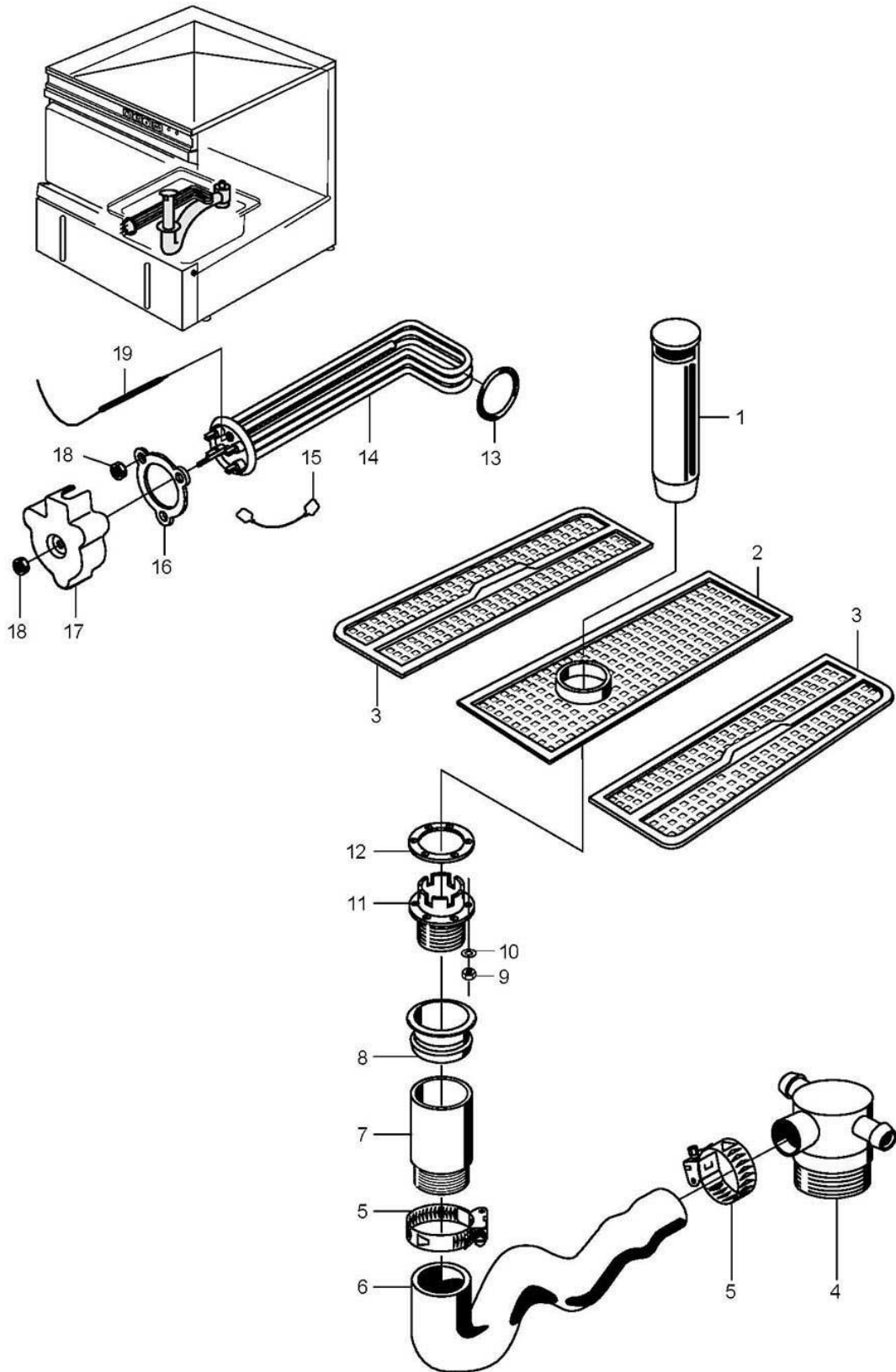
Water inlet

Item.	Designation	Parts no.:	Pc.	Notes
1	Tank inlet set	61004545		incl. item 1.1
1.1	Gasket; D17 X D24 X 2,0	62001366		
2	Lateral check valve	35 01 194		
3	Hose clamp; D12-22 X 9	28 02 105		
4	Industrial hose; DN13 X 3,5	40 02 035		1000 mm; "By-the-metre" goods
5	Industrial hose; DN13 X 3,5	40 02 035		830 mm; "By-the-metre" goods
6	Solenoid valve flow restrictor 15l; 220-240V/50-60HZ	31 06 180		
6	Solenoid valve flow restrictor 15l; 180-220V/50-60HZ	31 06 198		Japan
6.1	Solenoid valve filter	31 06 186		
7	Solenoid valve bracket; 1,5 X 100 X 114	62001891		
8	Washer; D5,3 X D10 X 1,0	22 01 300		
9	Hexagonal nut; M5 SELBSTSICHERND	21 05 302		
10	Countersunk screw; M4 X 8	20 10 309		
11	Metal hose; DN13 X 2000; G3/4"	29 01 321		incl. item 11.1
11.1	Gasket; D16 X D24 X 3,0	80002241	2	
12	Dirt trap; 150 µM	80002153		incl. item 12.1 - 12.3
12.1	Gasket; D16 X D24 X 3,0	80002241		
12.2	Double nipple; G 3/4" X 40; SW30	80002167		
12.3	Strainer; D27 X 67 X 150µM	80002728		
13	RC element; 0,15 MICRO F; 3,3 KOHM	31 13 114		only with Aquamatik; parallel to item 6 connect
14	Flat plug; 6,3 X 0,8	31 12 018		



GS 29**Water inlet (Tundish GB)**

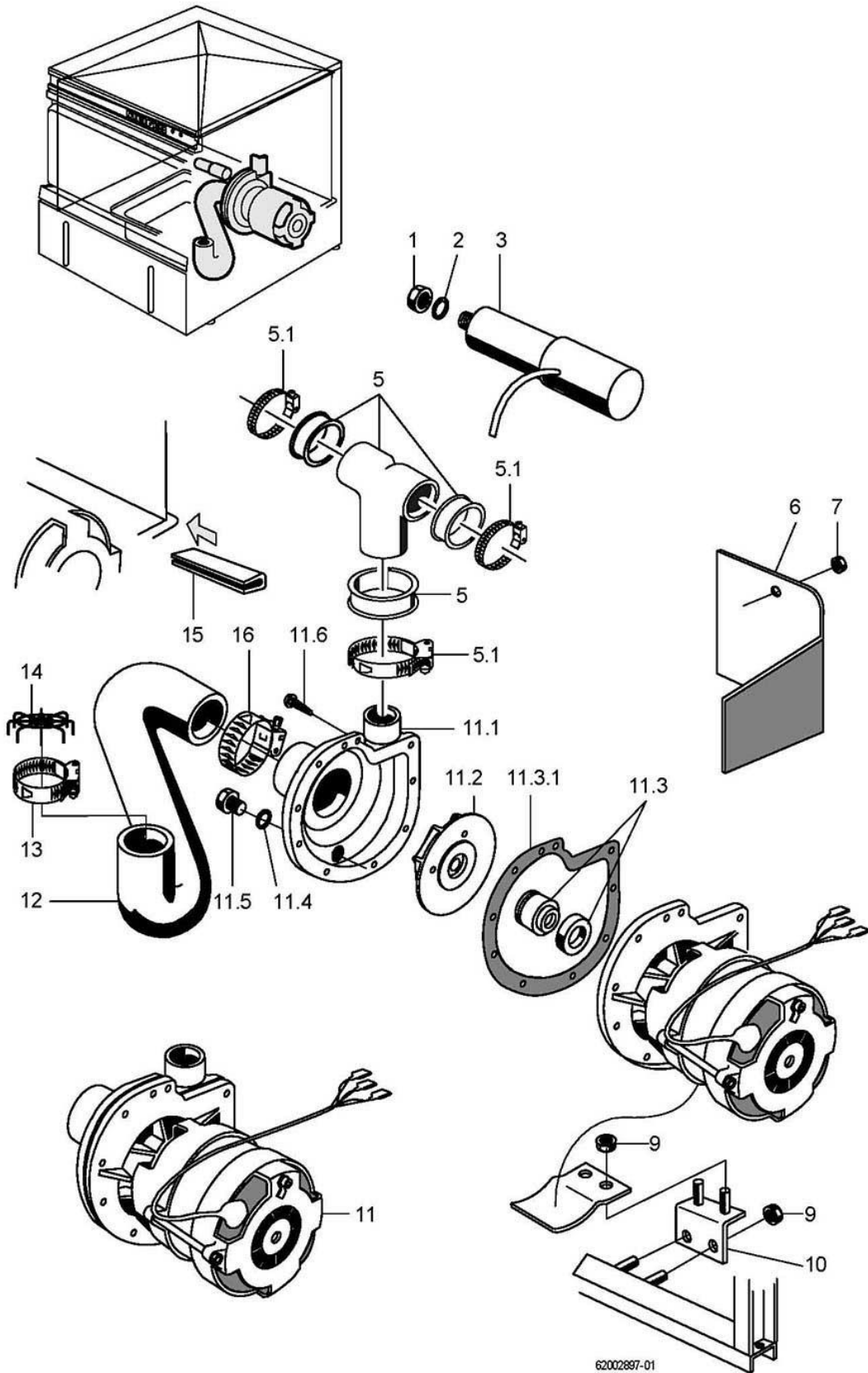
Item.	Designation	Parts no.:	Pc.	Notes
1	Hexagon nut; G 3/4" X 18,0; SW32	30 09 502		
2	Gasket; D26 X D36 X 2,0	27 01 003		
3	Wash manifold	62001810		
4	Hose clamp; D24-44 X 12	28 02 309		
5	Hose elbow; DN25 X 4,0	60002446		
6	Intermediate container; 39 X 131 X 293	60002542		
7	Pipe elbow; DN12 X DN14 X 2,0	60002507		
8	Washer; D5,3 X D10 X 1,0	22 01 300		
9	Hexagonal nut; M5 SELBSTSICHERND	21 05 302		
10	Hose clamp; D12-22 X 9	28 02 105		
11	Industrial hose; DN13 X 3,5	40 02 035		1200 mm; "By-the-metre" goods
12	Hose elbow; DN13 X 3,5	62002565		adapt
13	Solenoid valve flow restrictor 5l; 220-240V/50-60HZ	31 06 174		incl. item 13.1
13.1	Solenoid valve filter	31 06 186		
14	Solenoid valve bracket; 1,5 X 100 X 114	62001891		
15	Washer; D5,3 X D10 X 1,0	22 01 300		
16	Hexagonal nut; M5 SELBSTSICHERND	21 05 302		
17	Countersunk screw; M4 X 8	20 10 309		
18	Metal hose; DN12 X 1500; G 3/4"	29 01 305		incl. item 18.1
18.1	Gasket; D16 X D24 X 3,0	80002241	2	
19	Dirt trap; 150 µM	80002153		incl. item 19.1 – 19.3
19.1	Gasket; D16 X D24 X 3,0	80002241	2	
19.2	Double nipple; G 3/4" X 40; SW30	80002167		
19.3	Strainer; D27 X 67 X 150µM	80002728		
20	RC element; 0,15 MICRO F; 3,3 KOHM	31 13 114		
21	Flat plug; 6,3 X 0,8	31 12 018	2	



62002896-00

GS 29**Tank heating and water drain**

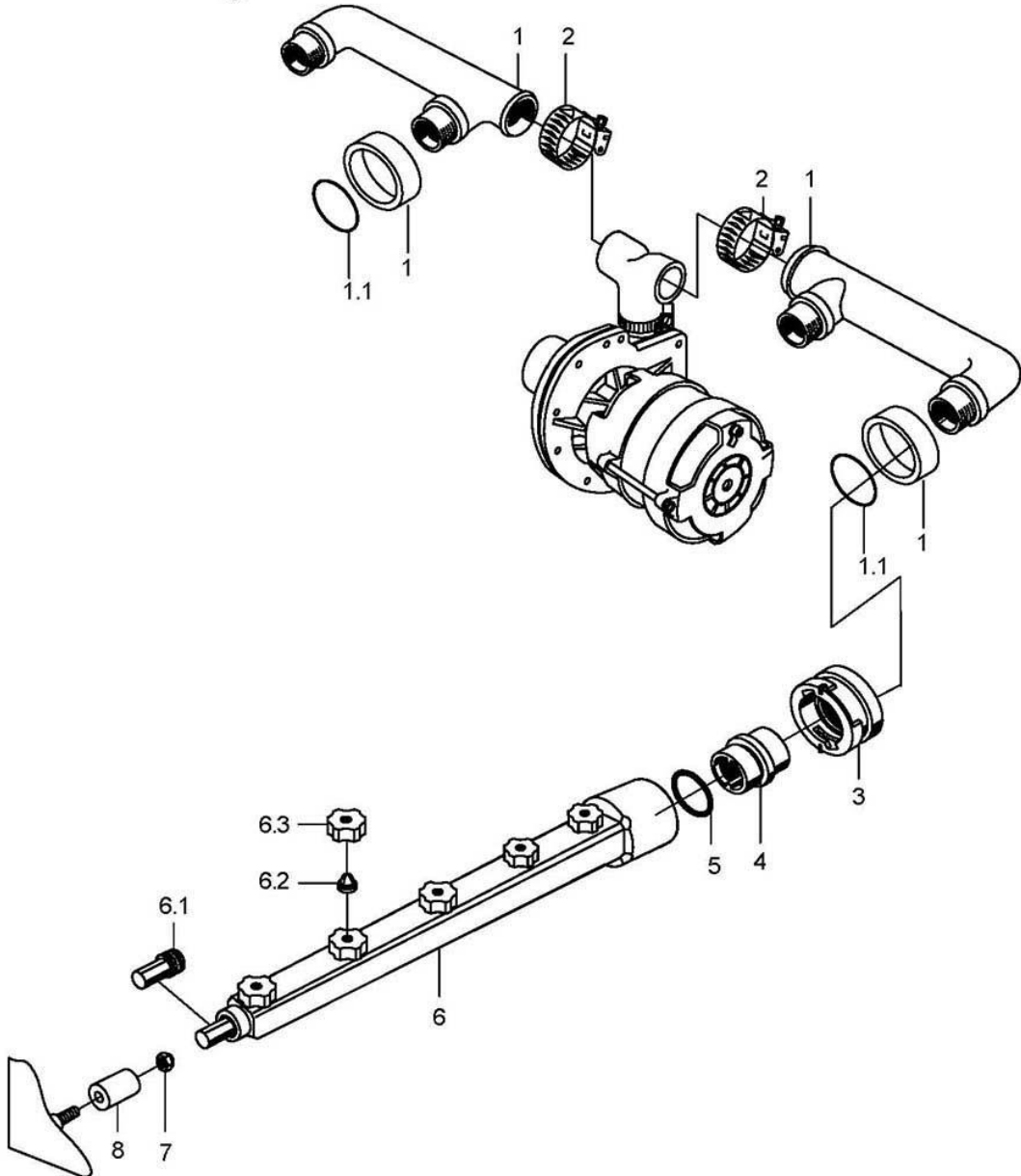
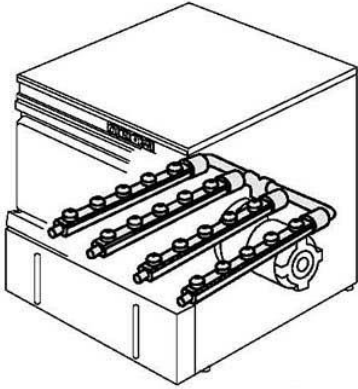
Item.	Designation	Parts no.:	Pc.	Notes
1	Standpipe; ÜBERLAUFHÖHE 130	62002648		
2	Surface strainer central piece; 8,5 X 127 X 300	62001882		
3	Scrap tray	62001943	2	
4	Mediamat drain; G 1 1/2"; D40	35 01 080		
5	Hose clamp; D32-52 X 12	28 02 110		
6	Syphon; DN38 X 6	62001413		
o.P.	Outlet fittings cpl.	62001942		incl. item 4 - 6
7	Drain adapter; D50 X G1 1/2" X 100	62001497		
8	Gasket; D45 X 23	27 01 027		
9	Hexagonal nut; M5 SELBSTSICHERND	21 05 302		
10	Washer; D5,3 X D10 X 1,0	22 01 300		
11	Stand pipe bottom part; D87 X 50,5	62001805		
12	Gasket; D52 X D83,5 X 2,0	62001749		
13	O-ring; 43 X 7,0	27 07 088		
14	Heating element cranked/ L 5,0kW; 230V/400V/3	31 03 089		
14	Heating element cranked/ L 5,0kW; 240V/420V/3	31 03 094		
14	Heating element cranked/ L 5,0kW; 200V/346V/3	31 03 103		
15	Star bridge; 2,5QMM; 90 LG	31 23 088	2	
16	Locking washer; D43 X D80 X 4,0	01 17 003		
17	Element cover; 50 X D67 X 89,5	31 03 014		
18	Hexagonal nut; M5	21 01 303		
19	Safety thermostat; 160 GRAD C -12K "AUS"	31 25 030		
o.P.	Hose elbow; DN50 X 4,0	40 03 044		with left-hand exit



GS 29

Wash system I

Item.	Designation	Parts no.:	Pc.	Notes
1	Hexagonal nut; M8 SELBSTSICHERND	21 05 306		
2	Washer; D8,4 X D17 X 1,6	22 01 303		
3	Capacitor; 12,5 MIKRO F	31 13 028		
5	Set pump pressure elbow	55 28 221		incl. item 5.1
5.1	Hose clamp; D32-52 X 12	28 02 110	3	
6	Pump cover; 1,0 X 116 X 206	62001931		
7	Hexagonal nut; M4 SELBSTSICHERND	21 05 300		
9	Hexagonal nut; M5 SELBSTSICHERND	21 05 302		
10	Pump bracket; 1,25 X 43,6 X 60	62001853		
11	Pump 0,55kW 6/0; 230V/1/50HZ	31 02 276		incl. item 11.1 - 11.6
11	Pump 0,55kW 6/0; 200V/1/50HZ	31 02 319		incl. item 11.1 - 11.6
11	Pump 0,55kW 6/0; 200V/1/60HZ	31 02 320		incl. item 11.1 - 11.6
11	Pump 0,55kW 6/0; 230V/1/60HZ	31 02 070		incl. item 11.1 - 11.6
11.1	Pump housing	31 02 200		
11.2	Impeller; D96	31 02 201		50 Hz
11.2	Impeller; D81; 0,55KW; 60HZ	55 14 034		60 Hz
11.3	Sealing kit; 0,73/0,55/0,37 KW	80002673		incl. item 11.3.1
11.3.	Pump housing gasket	31 02 203		
11.4	Gasket; M8	22 08 505		
11.5	Hexagon screw; M8 X 16; A70	20 01 302		
11.6	Sheet metal screw; ST 3,9 X 19	20 22 302		
12	Reducing elbow; DN44 X DN60	62001812		
13	Hose clamp; D62-82 X 12	28 02 137		
14	Inline filter; D72	62001956		
15	Edge protection profile; U9,5 X 2,0	40 04 015		100 mm; "By-the-metre" goods
16	Hose clamp; D47-67 X 12	28 02 115		

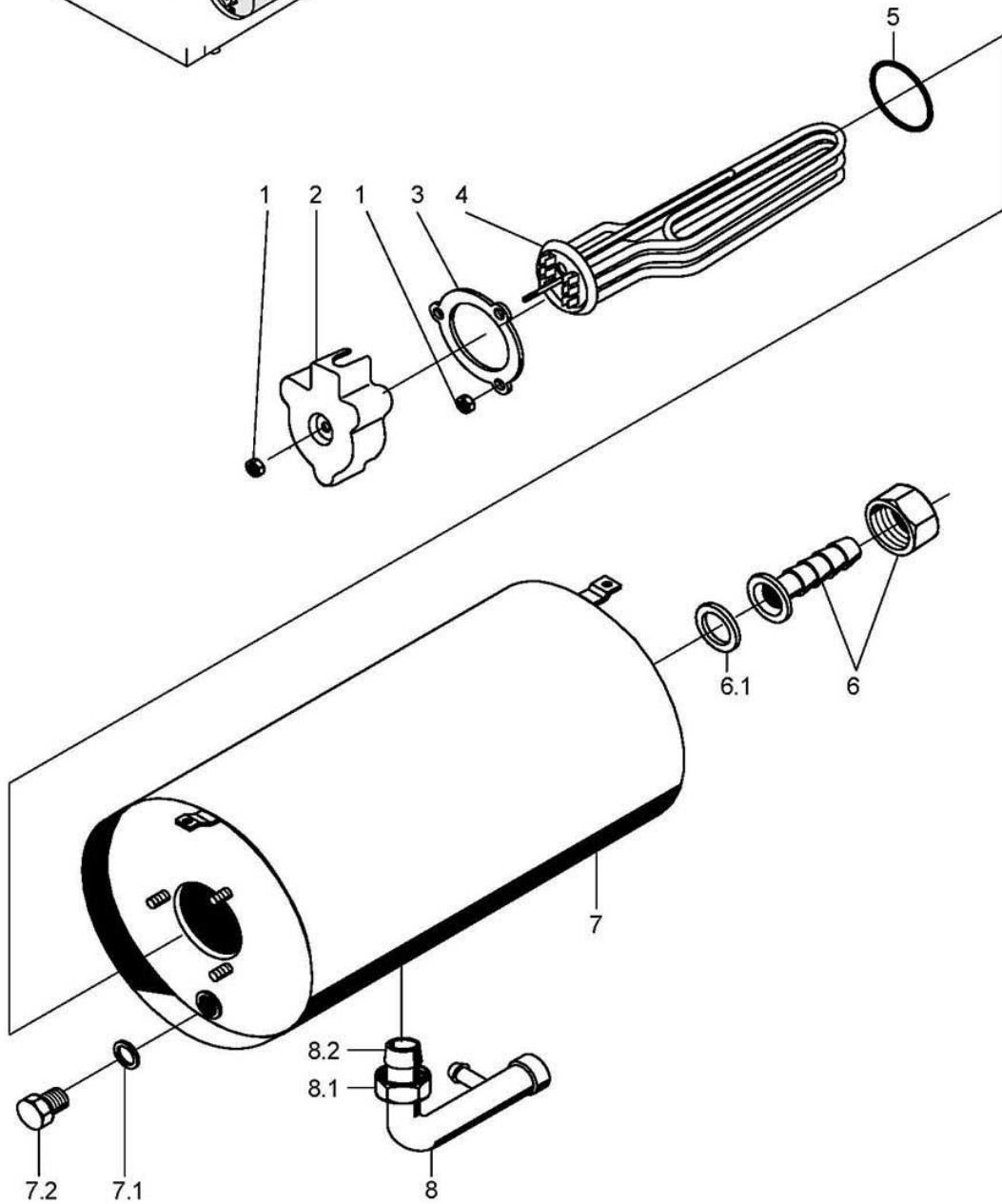
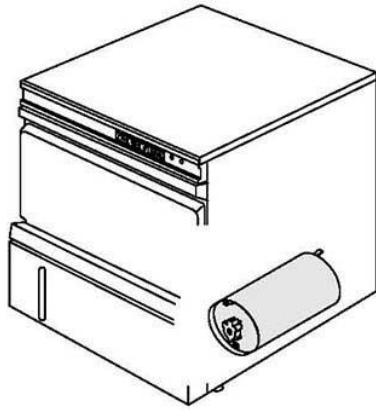


62002898-01

GS 29

Wash system II

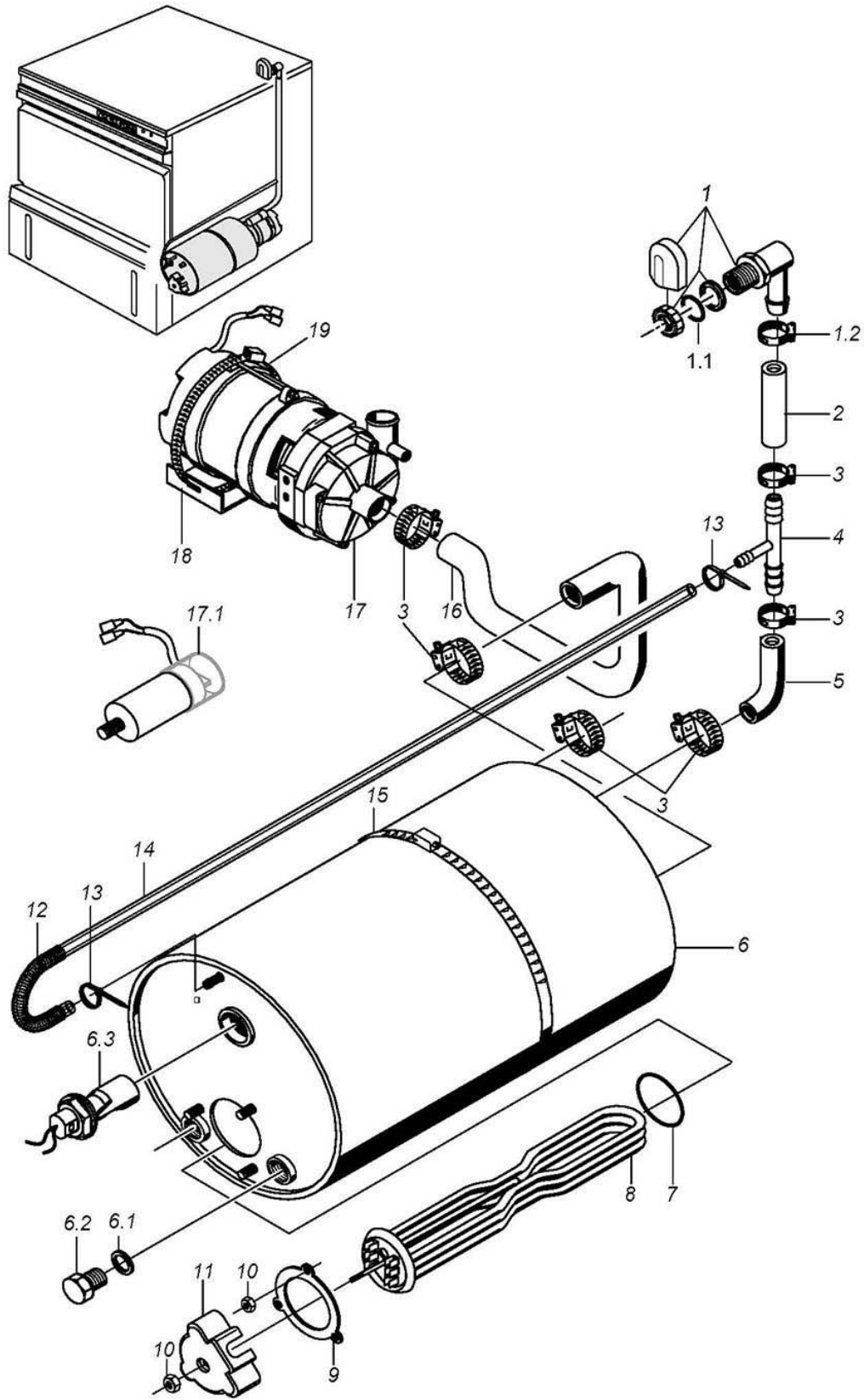
Item.	Designation	Parts no.:	Pc.	Notes
1	Wash distributor cpl.	62002887		incl. item 1.1
1.1	O-ring; 24 X 3,0	27 07 087		
2	Hose clip; D32,9-36,1 X 7	28 02 103		
3	Locking ring; D49 X 28	61002023	4	
4	Locking nut; D38 X 28; G 3/4"	61004059	4	
5	O-ring; 28 X 2,5	27 07 049	4	
6	Wash arm cpl.; 5 DÜSEN; 469 LG	62001807	4	incl. item 6.1 - 6.3
6.1	Wash arm plug; G 1/2" X 37	35 01 210		
6.2	Cross recession jet 10 degrees; D20,5 X 14	62001809	5	
6.3	Coupling nut for wash jet; G 3/4" X D16	62001808	5	
7	Hexagonal nut; M4 SELBSTSICHERND	21 05 300		
8	Guide for washarm; D28 X 30	61002263	4	



62002899-00

GS 29**Rinse I (pressure boiler)**

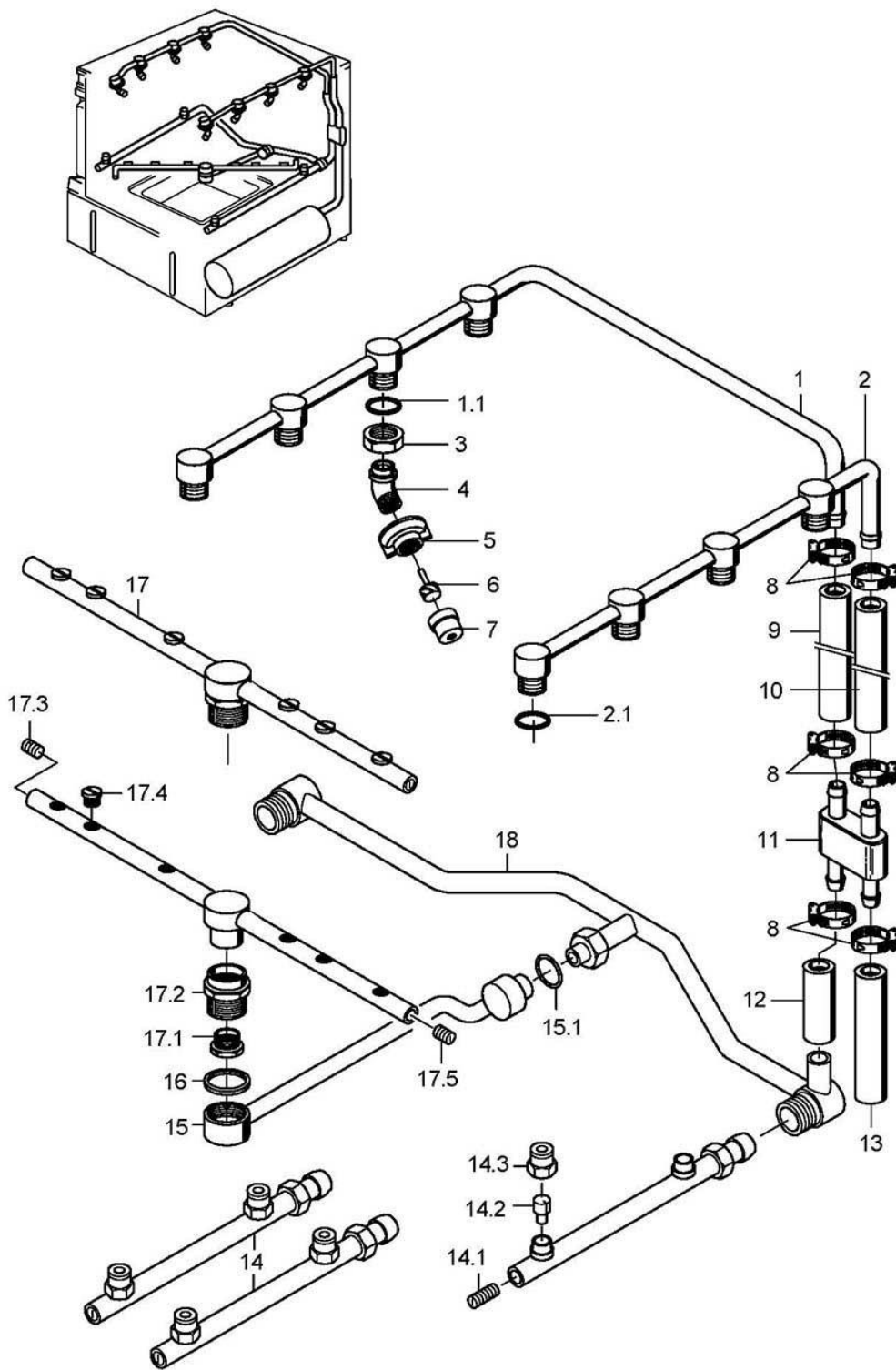
Item.	Designation	Parts no.:	Pc.	Notes
1	Hexagonal nut; M5	21 01 203		
2	Element cover; 50 X D67 X 89,5	31 03 014		
3	Locking washer; D43 X D80 X 4,0	01 17 003		
4	Heating element cranked 5,0kW; 230V/400V/3	31 03 030		
4	Heating element cranked 5,0kW; 240V/420V/3	31 03 032		
4	Heating element cranked 5,0kW; 200V/346V/3	31 03 098		
5	O-ring; 43 X 7,0	27 07 088		
6	Hose coupling; R 3/4" X 1/2"	60002453		incl. item 6.1
6.1	Gasket; D16 X D24 X 3,0	80002241		
7	Boiler; 5 KW	55 12 033		incl. item 7.1 – 7.2
o.P.	Boiler - 2 temp.	60001955		
7.1	Gasket; D10 X D18 X 1,5	27 03 003		
7.2	Hexagon screw; M10 X 16; A70	20 01 352		
8	Boiler inlet elbow	55 09 055		incl. item 8.1 - 8.2
8.1	Union nut; G 1/2" X D12,2; SW24	29 07 201		
8.2	Cutting ring; D12 X 10	29 07 300		



62002300-01

GS 29**Rinse I (AquaMatik)**

Item.	Designation	Parts no.:	Pc.	Notes
1	Set tank inlet	60002686		incl. item 1.1 - 1.2
1.1	Gasket; D21 X D28 X 2,0	27 09 011		replaced by 60002686
1.1	Gasket; D20,5 X D28,5 X 2,0	27 01 002		replaced by 60002686
1.1	O-ring; 20 X 3	27 07 031		
1.2	Hose clamp; D20-30 X 12	28 02 109		
2	Industrial hose; DN13 X 3,5	40 02 035		700 mm; "By-the-metre" goods
3	Hose clamp; D20-30 X 12	28 02 109		
4	T-piece; D6,6 X D14 X D14	35 01 086		
5	Industrial hose; DN13 X 3,5	40 02 035		300 mm; "By-the-metre" goods
6	Boiler aquamatik	60002914		from 11/98 round; up to 10/98 cornered; incl. set install boiler ventilation 5528257
6	Pressureless boiler 2 temperatures	60002685		
6.1	Gasket; D10 X D18 X 1,5	27 03 003		
6.2	Hexagon screw; M10 X 16; A70	20 01 352		
6.3	Rubber seal; D27 X D20 X 14	31 26 036		
6.3	Floating switch installation set	55 28 255		
7	O-ring; 43 X 7,0	27 07 088		
8	Heating element cranked 5,0kW; 230V/400V/3	31 03 030		
8	Heating element cranked 5,0kW; 240V/420V/3	31 03 032		
8	Heating element cranked 5,0kW; 200V/346V/3	31 03 098		
9	Locking washer; D43 X D80 X 4,0	01 17 003		
10	Hexagonal nut; M5	21 01 203		
11	Element cover; 50 X D67 X 89,5	31 03 014		
12	Spring; D0,8 X D110 X 280	62002419		
13	Cable tie; 200 X 4,7	31 20 015		
14	Hose; DN5 X 1,5	40 01 024		700 mm; "By-the-metre" goods
15	Hose clamp; D50-215 X 12	28 02 126		
16	Hose elbow; DN25 X 3,5	62002373		
17	Pump 0.270 kW 8/0; 220/240V/1/50HZ	31 02 477		
17	Pump 0.270 kW 8/0; 200V/1/50HZ	31 02 446		
17	Pump 0.270 kW 8/0; 200V/1/60HZ	31 02 447		
17	Pump 0.270 kW 8/0; 220/240V/1/60HZ	31 02 445		
17.1	Capacitor; 5 MIKRO F	31 13 099		
18	Pump bracket; 2,0 X 60 X 96	62001976		to machine no.: 345 471
18	Bracket; 1,5 X 40 X 78	62002551		From machine no.: 345 472
19	Hose clamp; D92-112 X 12	28 02 125		
o.P.	Star bridge; 2,5QMM; 90 LG	31 23 088		

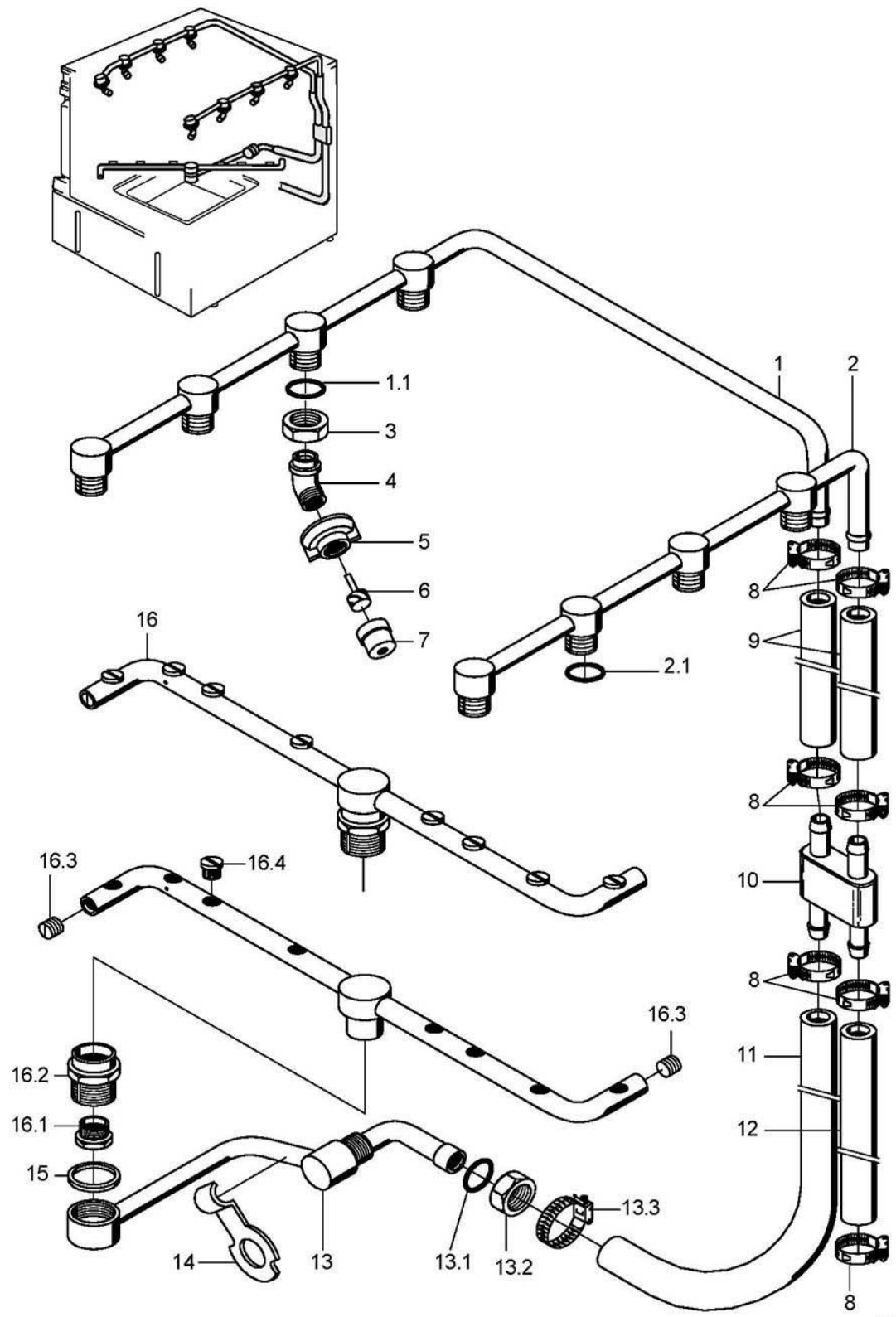


60002901-00

GS 29

Rinse II to machine no.: 223 460

Item.	Designation	Parts no.:	Pc.	Notes
1	Rinse manifold	62002842		incl. 27 07 001
1.1	Gasket; D17 X D24 X 2,0	62001366	4	to machine no.: 381 854
1.1	O-ring; 16 X 2,5	27 07 001	4	From machine no.: 381 855
2	Rinse manifold	62002841		incl. 27 07 001
2.1	Gasket; D17 X D24 X 2,0	62001366	4	to machine no.: 381 854
2.1	O-ring; 16 X 2,5	27 07 001	4	From machine no.: 381 855
3	Hexagonal nut; G 3/8" X 5,5; SW22	30 09 200	8	
4	Rinse jet adapter	62001176	8	
5	Union nut; G 3/8"; D34 X 15	62001174	8	
6	Spray jet swirl	65002755	8	
7	Rinse jet cap	65002754	8	
8	Hose clamp; D20-30 X 12	28 02 306		
9	Industrial hose; DN13 X 3,5	40 02 035		150 mm; "By-the-metre" goods
10	Industrial hose; DN13 X 3,5	40 02 035		200 mm; "By-the-metre" goods
11	Distributor for rinse manifold	62001391		
12	Industrial hose; DN13 X 3,5	40 02 035		80 mm; "By-the-metre" goods
13	Hose elbow; DN13 X 4,0	40 03 052		
14	Rinse pipe cpl.; 2 DÜSEN; 458 LG	62001899		incl. item 14.1 - 14.3
14.1	Threaded pin; M9 X 40	20 30 502		
14.2	Spray jet swirl	65002755		
14.3	Rinse jet cap	65002754		
15	Revolving arm kit	55 10 114		incl. revolving arm 62002891
15.1	O-ring; 16 X 2,5	27 07 001		
16	Gasket; D27 X D34 X 2,0	27 09 025		
17	Revolving arm; 6 DÜSEN; 458 LG	55 10 078		incl. item 17.1 – 17.5
17.1	Threaded nipple; M14 X 1,0 X 13; SW19	20 19 204		
17.2	Rev. Rinse arm socket; R 3/4" X 24,5; SW30	35 01 161		
17.3	Threaded stud; M11 X 1,0 X 8	29 10 239		
17.4	Flat jet nozzle; 1/16 NPT; SW10	29 10 312	6	
17.5	Threaded stud with o-ring; M11 X 1,0 X 14	29 10 240		
18	Rinse manifold bottom cpl.	62001893		

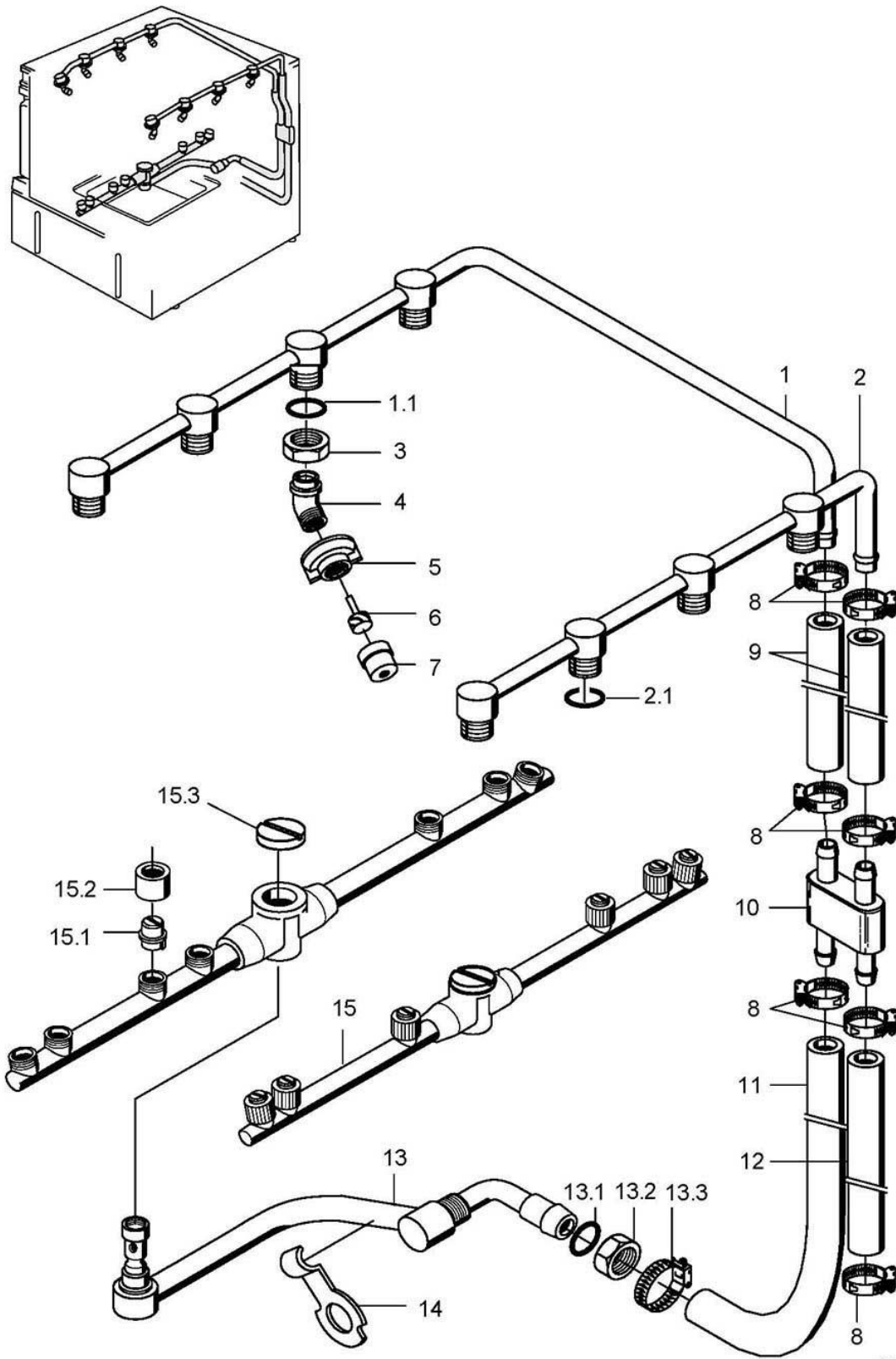


62002902-01

GS 29

Rinse II From machine no.: 223 461 to machine no.: 396 847

Item.	Designation	Parts no.:	Pc.	Notes
1	Rinse manifold	62002842		incl. 27 07 001
1.1	Gasket; D17 X D24 X 2,0	27 09 009		to machine no.: 381 854
1.1	O-ring; 16 X 2,5	27 07 001		From machine no.: 381 855
2	Rinse manifold	62002841		incl. 27 07 001
2.1	Gasket; D17 X D24 X 2,0	27 09 009		to machine no.: 381 854
2.2	O-ring; 16 X 2,5	27 07 001		From machine no.: 381 855
3	Hexagonal nut; G 3/8" X 5,5; SW22	30 09 200	8	
4	Rinse jet adapter	62001176	8	
5	Union nut; G 3/8"; D34 X 15	62001174	8	
6	Spray jet swirl	65002755	8	
7	Rinse jet cap	65002754	8	
8	Hose clamp; D20-30 X 12	28 02 306		
9	Industrial hose; DN13 X 3,5	40 02 035		280 mm; "By-the-metre" goods
10	Distributor for rinse manifold	62001391		
11	Hose elbow; DN13,5 X 3,5	62001573		adapt
12	Hose elbow; DN13,5 X 3,5	62001573		Pressure boiler
12	Reducing elbow; DN13 X DN25	62002145		Pressure-independent boiler
13	Revolving arm kit	55 10 114		incl. revolving arm 62002891
13.1	O-ring; 16 X 2,5	27 07 001		
13.2	Hexagonal nut; G 3/8" X 5,5; SW22	30 09 200		
13.3	Hose clamp; D20-30 X 12	28 02 306		
14	Bracket; 0,8 X 50 X 92,3	60002320		retrofittable
15	Gasket; D27 X D34 X 2,0	27 09 025		
16	Revolving arm; 470 LG	62001958		incl. item 16.1 – 16.4
16.1	Threaded nipple; M14 X 1,0 X 13; SW19	20 19 204		
16.2	Rev. Rinse arm socket; R 3/4" X 24,5; SW30	35 01 161		
16.3	Threaded stud; M11 X 1,0 X 8	29 10 239		
16.4	Flat jet nozzle; 1/16 NPT; SW10	29 10 312		

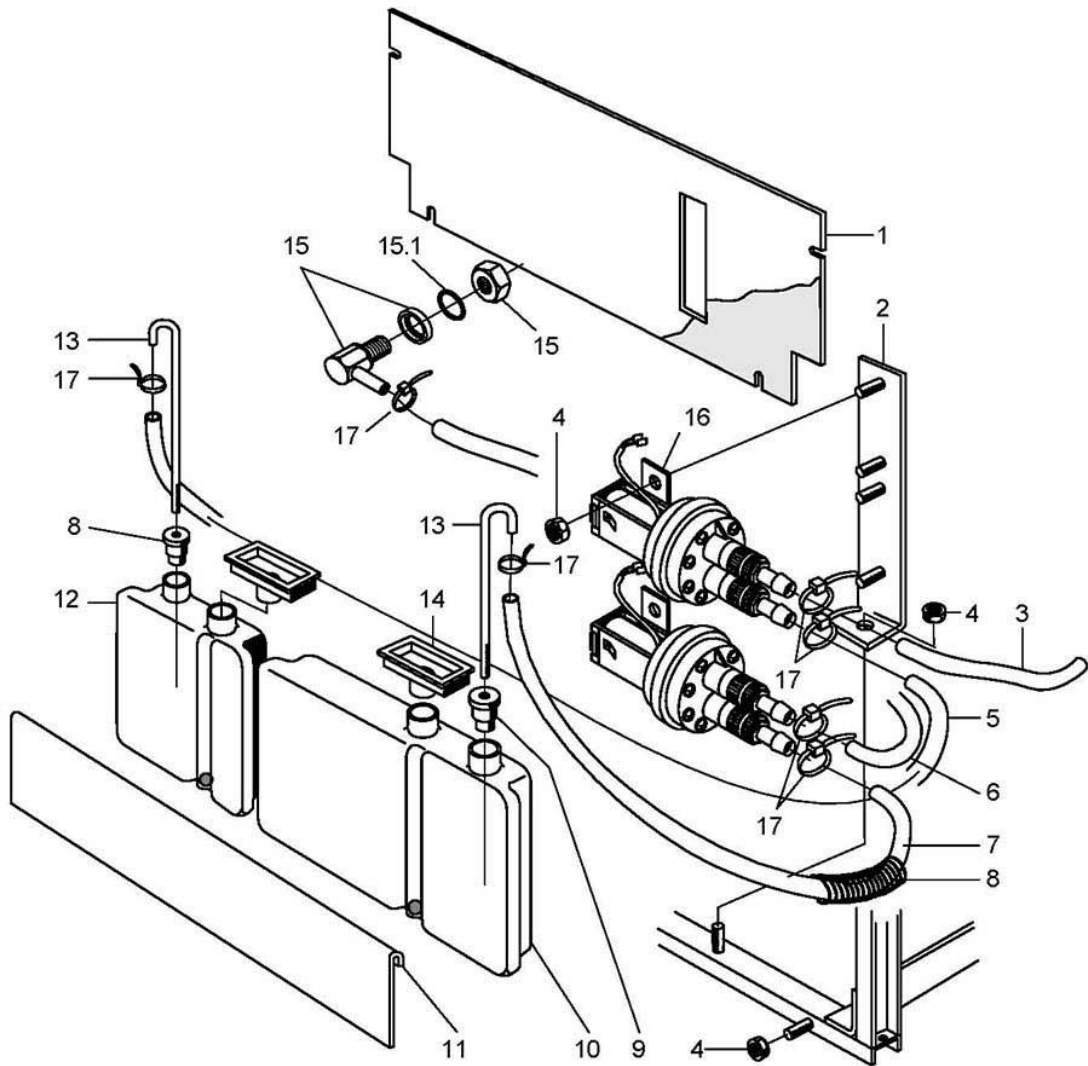
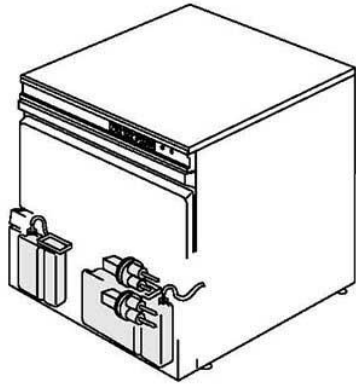


62002903-00

GS 29

Rinse II From machine no.: 396 848

Item.	Designation	Parts no.:	Pc.	Notes
1	Rinse manifold	62002842		incl. item 1.1
1.1	O-ring; 16 X 2,5	27 07 001	4	
2	Rinse manifold	62002841		incl. item 1.1
2.1	O-ring; 16 X 2,5	27 07 001	4	
3	Hexagonal nut; G 3/8" X 5,5; SW22	30 09 200	8	
4	Rinse jet adapter	62001176	8	
5	Union nut; G 3/8"; D34 X 15	62001174	8	
6	Spray jet swirl	65002755	8	
7	Rinse jet cap	65002754	8	
8	Hose clamp; D20-30 X 12	28 02 306		
9	Industrial hose; DN13 X 3,5	40 02 035		280 mm; "By-the-metre" goods
10	Distributor for rinse manifold	62001391		
11	Hose elbow; DN13,5 X 3,5	62001573		adapt
12	Hose elbow; DN13,5 X 3,5	62001573		Pressure boiler
12	Reducing elbow; DN13 X DN25	62002145		Pressure-independent boiler
13	Rinse arm support cpl.	62002879		incl. item 13.1 - 13.3
13.1	O-ring; 16 X 2,5	27 07 001		
13.2	Hexagonal nut; G 3/8" X 5,5; SW22	30 09 200		
13.3	Hose clamp; D20-30 X 12	28 02 306		
14	Bracket; 0,8 X 50 X 92,3	60002320		
15	Revolving arm	62002891		incl. item 15.1 - 15.3
15.1	Fan jet; size 8; D11,2 X 10	62002811	7	
15.2	Union nut; M14 X D9,1; D17	62002812	7	
15.3	Screw cap; M10 X D7,8 X D24	61005681		

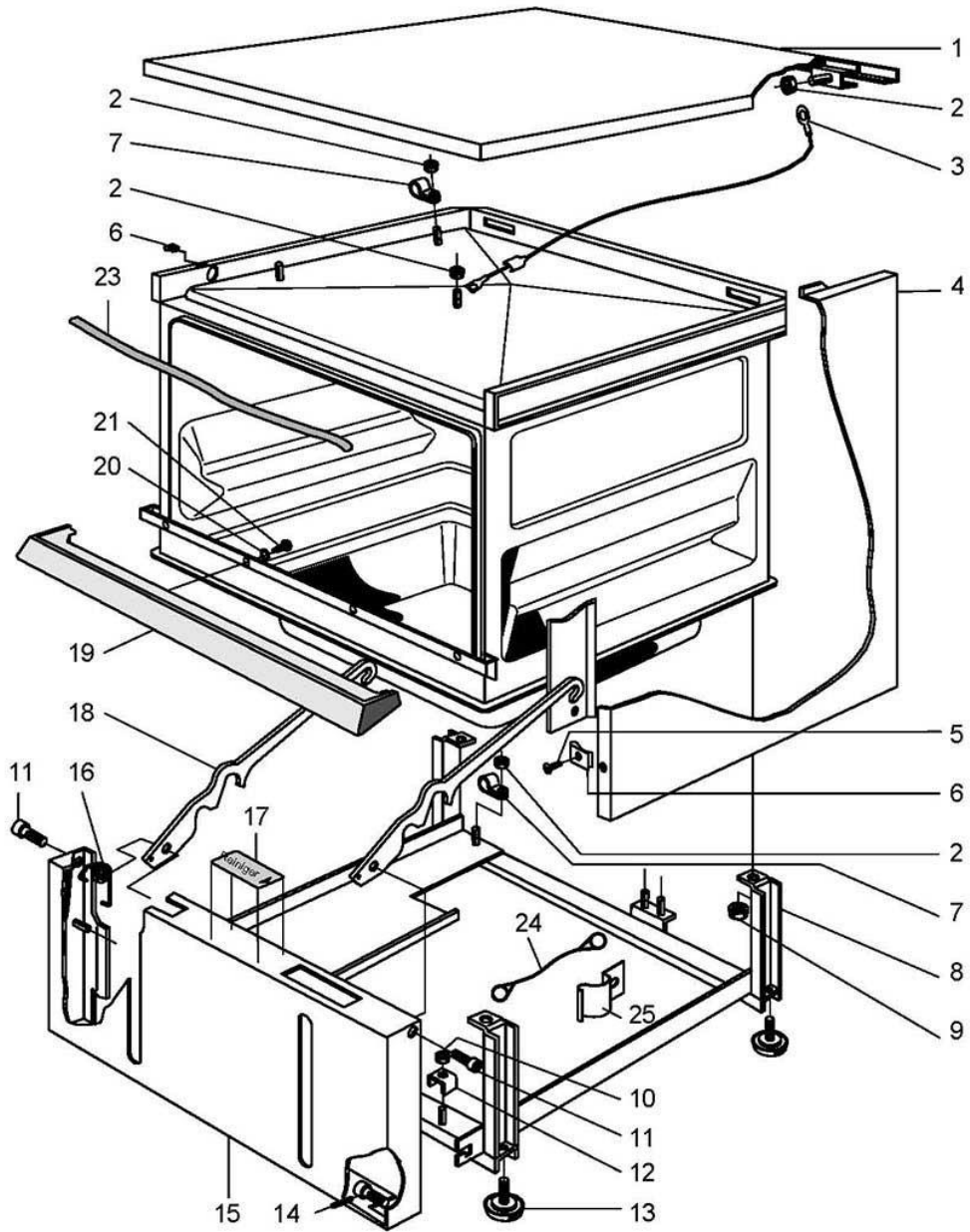
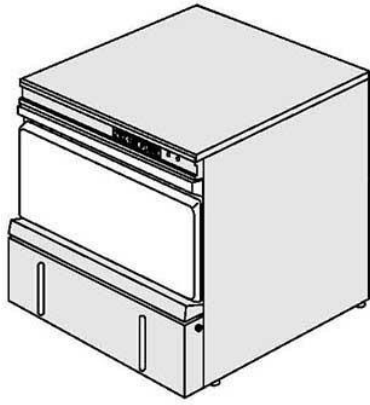


62002904-00

GS 29

Dosage

Item.	Designation	Parts no.:	Pc.	Notes
1	Safety cover; 2,0 X 195 X 552	62001930		
2	Support for dispenser	62002989		
3	Hose; DN5 X 1,5	40 01 024		330 mm; "By-the-metre" goods
4	Hexagonal nut; M5 SELBSTSICHERND	21 05 302		
5	Hose; DN5 X 1,5	40 01 024		1100 mm; "By-the-metre" goods
6	Hose; DN5 X 1,5	40 01 024		470 mm; "By-the-metre" goods
7	Hose; DN5 X 1,5	40 01 024		340 mm; "By-the-metre" goods
8	Spring; D0,8 X DI10 X 280	62002419		
9	Reducing bush; D30 X 25	40 06 011		
10	Detergent container cpl.; 1,8 LITER	62001292		with display
11	Plate for detergent flap; 1,5 X 112 X 570	62001864		
12	Rinse aid container cpl.; 1,0 LITER	62001304		
13	Rinse aid suction pipe; D6 X 1,0 X 278	62001301		
14	Filling funnel; 47 X 108 X 2,5; D22	62001331		
15	Detergents dosing nipple set	62002869		incl. item 15.1
15.1	O-ring; 10 X 2,5	27 07 030		
16	ELT 10 replacement set	55 28 278		
17	Wire hose clamp; D8,6 X 1	28 02 348		

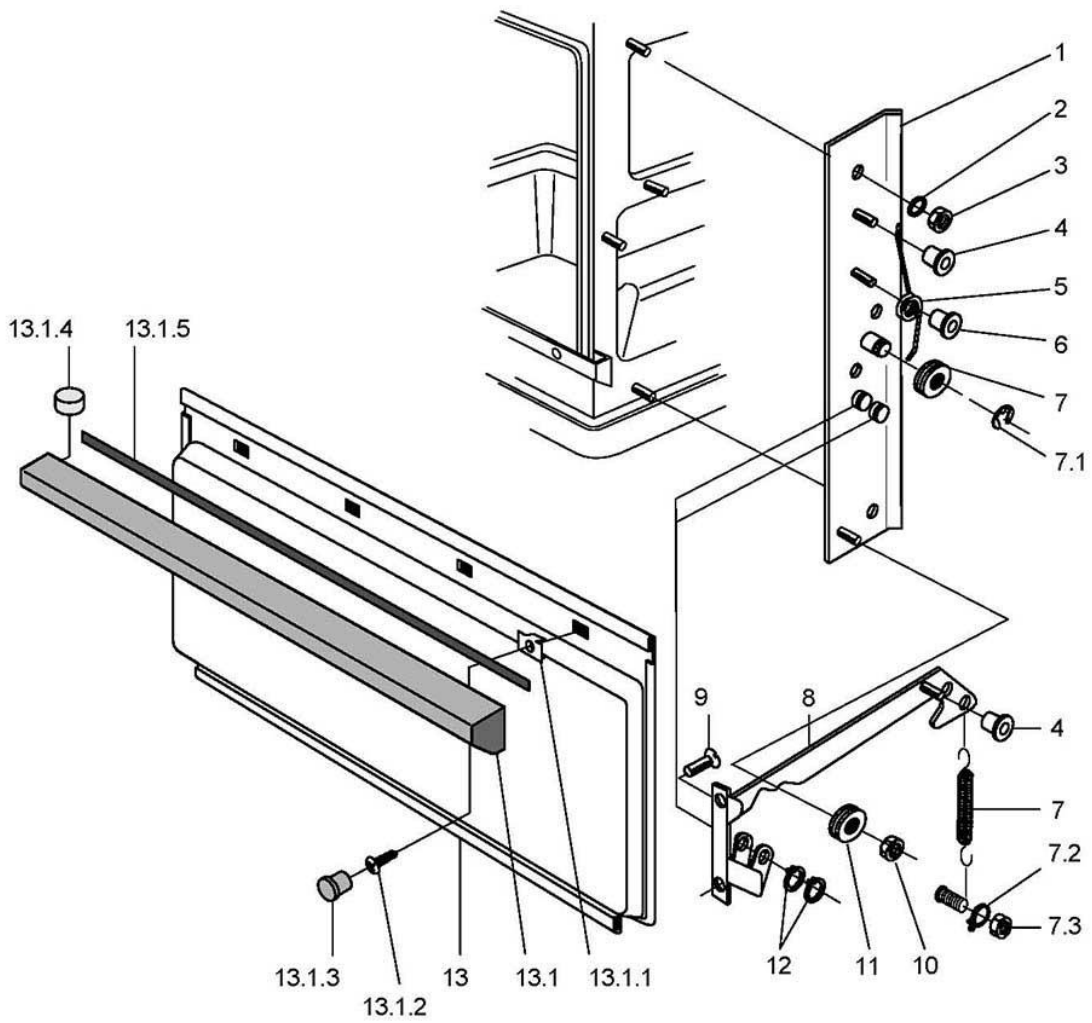
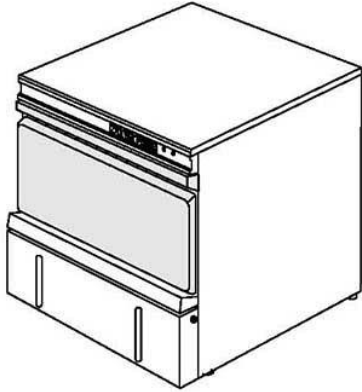


62002905-00

GS 29

Chassis, container and panelling

Item.	Designation	Parts no.:	Pc.	Notes
1	Cover plate cpl.; 0,8 X 617,4 X 641,8	62001888		
2	Hexagonal nut; M4 SELBSTSICHERND	21 05 300		
3	Wiring set	62001916		
4	Housing panel right; 0,8 X 592,1 X 731	62002126		
4	Housing panel left compl.	62002124		
4	Rear panel; 0,8 X 592 X 619,6	62002128		
o.P.	Panel; 0,8 X 731 X 1744,7	62001886		
5	Plate screw; ST 3,9 X 13	20 21 302		
6	Sheet metal nut; B 3,9	21 17 300		
7	Nylon clip; 172 X 4,6; F.BOLZEN M5	31 20 008		
8	Base frame	62001846		
8	Base frame	62002405		Japan
9	Hexagonal nut; M5 SELBSTSICHERND	21 05 302		
10	Hexagonal nut; M6 SELBSTSICHERND	21 05 304		
11	Bearing bolt; M8 X 21	62001461	2	to machine no.: 334 999
12	Clamp strap; 1,8 X 14 X 26,07	31 09 095		
13	Adjustable foot; M8 X 60; SW24	62001973	4	
o.P.	Base cover; 1,0 X 531 X 582	60002023		
14	Pan head screw; M5 X 20	20 10 325		From machine no.: 335 000
15	Front panel; 54 X 237 X 597	62001860		
16	Locking spring; 0,5 X 10 X 17 X 76	62002187	2	to machine no.: 334 999
17	Information sign 'filling'; 0,2 X 35 X 124	62001382		
18				replaced by item 24, 25
19	Panel for trough	62001802		
20	Gasket; M4	22 08 502		
21	Raised head screw; M4 X 8	20 10 310		
23	Profile gasket; 10 X 4,0	62001618		550 mm; metre ware; up to mach. no. 359 665
23	Door seal; 445 X 550	60002704		From machine no.: 359 666 adapt
24	Stabilizer I; D1,0 X 205 +5	28 06 007		From machine no.: 335 000
25	Locking spring; 0,5 X 10 X 17 X 76	62002187		From machine no.: 335 000
o.P.	Cover	62001404		to machine no.: 334 999
o.P.	Edge protection	62001437		to machine no.: 334 999

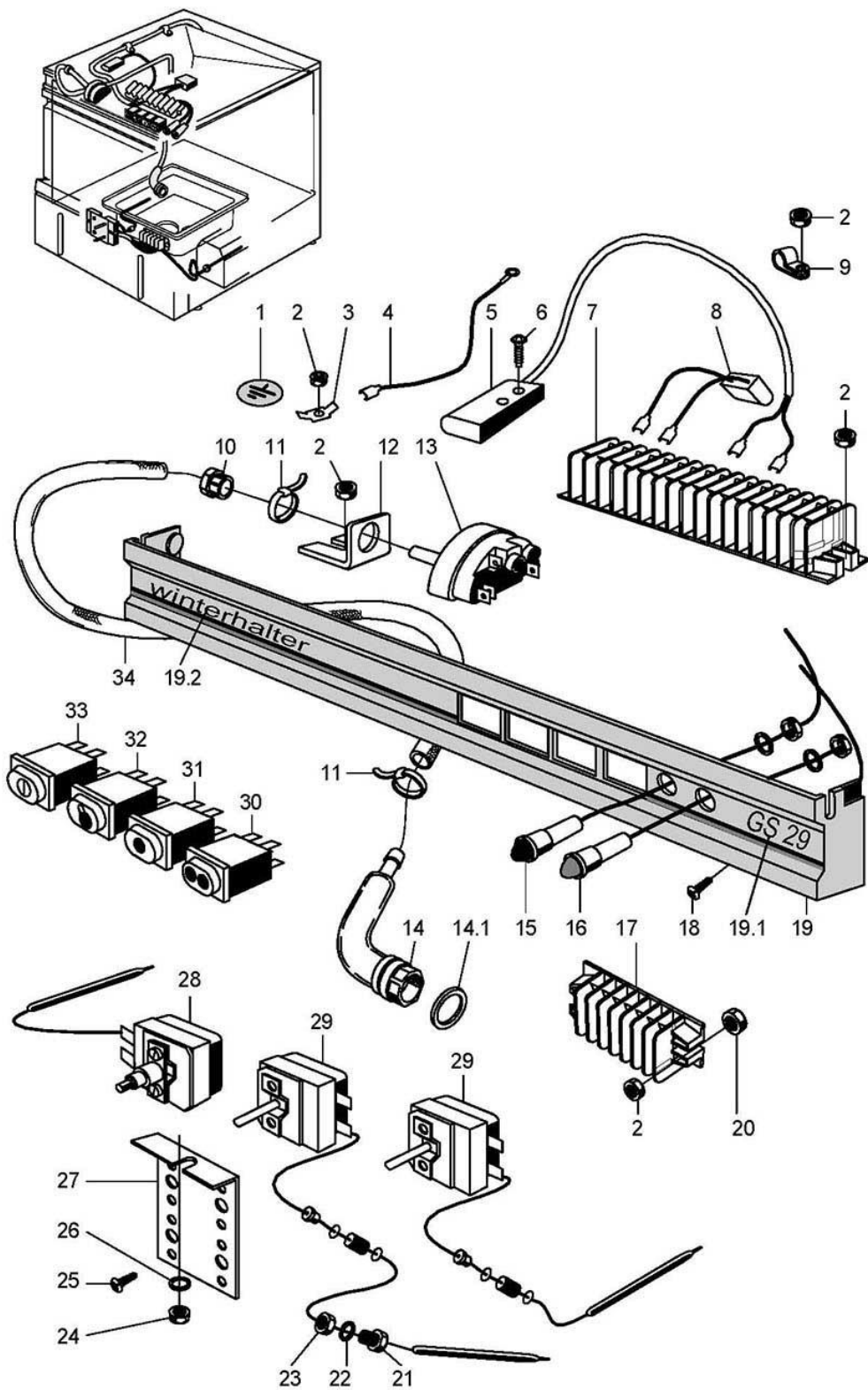


62002906-00

GS 29

Door

Item.	Designation	Parts no.:	Pc.	Notes
1	Door brace right cpl.; 405 LG	62001830		
o.P.	Door brace left cpl.; 405 LG	62001831		
2	Washer; D5,3 X D10 X 1,0	22 01 300		
3	Hexagonal nut; M5 SELBSTSICHERND	21 05 302		
4	Buffer; D20 X 8	62001433	4	
5	Tension spring right; LO13,95; DA18; D3	62001189		
o.P.	Tension spring left; LO13,95; DA18; D3	62001190		
6	Pivot bearing f/tension spring; D20 X 14	62001191	2	
7	Set door lever roller 14/15/29	55 28 193		incl. item 7.1 – 7.3 for both sides
7.1	Locking disk; D6 X 0,7	23 10 304	2	
7.2	Hose clip; D9 X 1	28 02 133	2	
7.3	Hexagonal nut; M5 SELBSTSICHERND	21 05 302	2	
8	Door brace right cpl.	62001836		
o.P.	Door brace left cpl.	62001837		
9	Countersunk screw; M5 X 12	20 12 303		
10	Hexagonal nut; M4 SELBSTSICHERND	21 05 300		to machine no.: 334 999
11	Door lever roller; D25,5 X 10,7	62002546		
12	Locking disk; D6 X 0,7	23 10 304		
13	Door cpl.	62001870		incl. item 13.1
13.1	Door handle kit	55 15 163		incl. item 13.1.1 – 13.1.5
13.1.	Expanding nut; 7,75 X 9,5 X 11	62002832	4	
13.1.	Sheet metal screw; ST 3,9 X 16	20 20 306	4	
13.1.	Plug; D11 X 4,8	35 01 213	4	
13.1.	Magnet; D10 X 10	31 24 191		
13.1.	Door seal; 2,5 X 9,5 X 594,5	62001953		

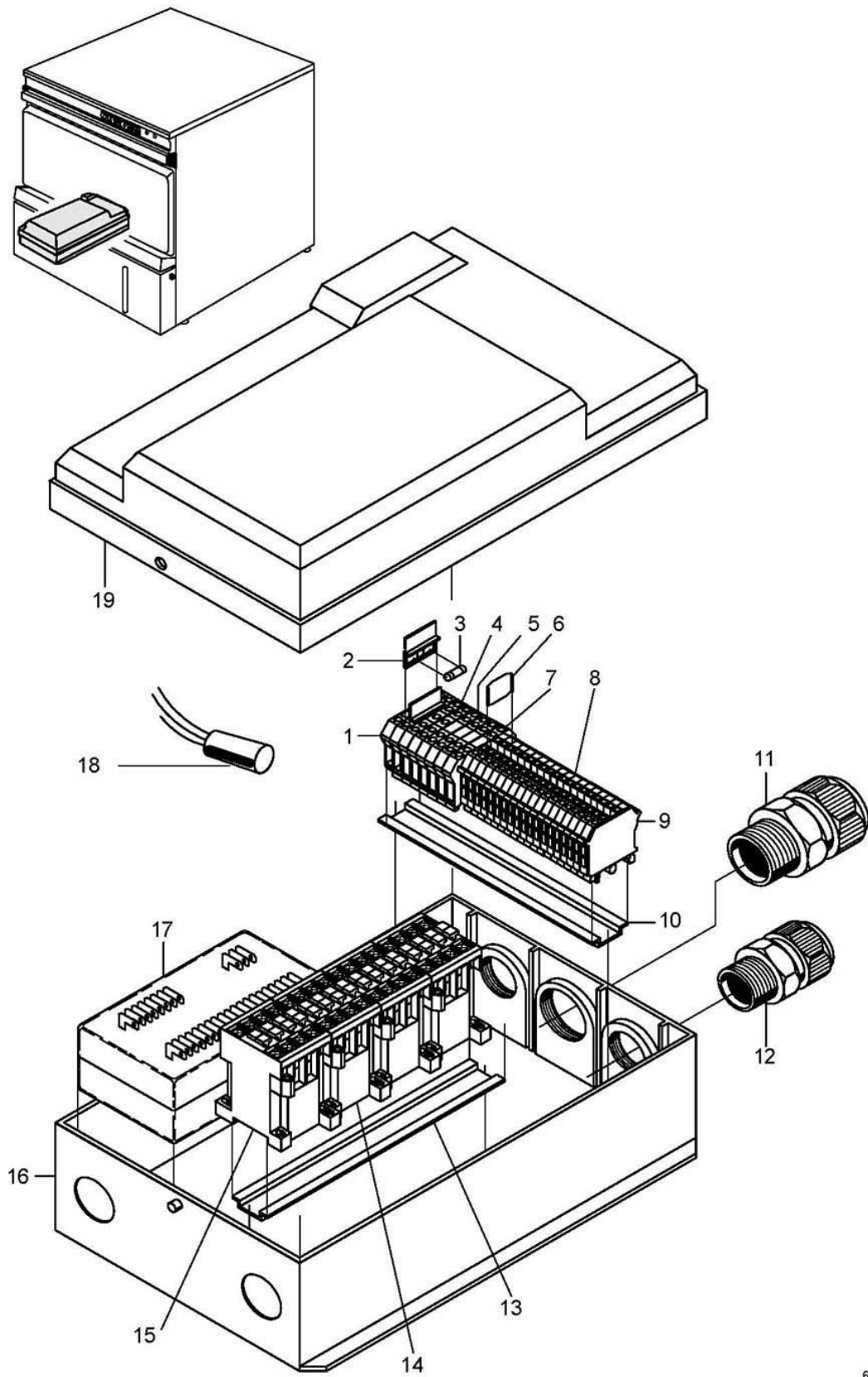


62002907-00

GS 29

Electrical parts I

Item.	Designation	Parts no.:	Pc.	Notes
1	Protection symbol green/yellow, D16	31 09 096		
2	Hexagonal nut; M4 SELBSTSICHERND	21 05 300		
3	Flat plug; 6,3 X 0,8; D5,2	31 12 003		
4	Wiring set	62001916		
5	Magnetic switch; 180-265V AC 50/60HZ	31 24 221		
6	PT screw; KB 50 X 10	20 17 304		
7	Terminal strip; 16-POLIG	31 09 154	16	piece
8	Rc-member; 0,27 MICRO F; 220 OHM	60000990		
9	Fixing clamp; D11	31 10 125		
10	Bushing nipple; D12,7	31 10 069		
11	Wire hose clamp; D8,6 X 1	28 02 348		
12	Support bracket f/level switch; 1,0 X 30 X 54	62001350		
13	Level control; 250V/50-60HZ	31 26 029		violet-blue
14	Air chamber cpl.	55 04 024		incl. item 14.1
14.1	O-ring; 24 X 3,0	27 07 087		
15	LED red; 12V; 30MA	31 08 111		
16	LED yellow; 12V; 30MA	31 08 112		
17	Terminal strip; 9-POLIG	31 09 155		
18	Countersunk screw; M4 X 6	20 12 302		
19	Screen	55 19 078		incl. item 19.1 – 19.2
19.1	Type plate GS 29; 0,4 X 25 X 109,5	62001867		
19.2	Plate "winterhalter"; 0,4 X 25 X 347	62001866		
20	Round nut; M5	21 03 001		
21	Gland for thermostat; M14 X 1,0 X 15; SW19	31 25 001		
22	Gasket; D14,2 X D20 X 2,0	27 09 036		
23	Hexagonal nut; M14 X 1,0 X 5,0	31 25 002		
24	Hexagonal nut; M5 SELBSTSICHERND	21 05 302		
25	Raised head screw; M4 X 8	20 10 310		
26	Washer; D5,3 X D12 X 0,8	22 02 313		
27	Thermostat bracket; 1,0 X 56 X 98	62001859		
28	Safety thermostat; 160 GRAD C -12K "AUS"	31 25 030	2	
29	Thermostat; 1750 LG; 220V	31 25 013	2	
30	Pressure key "Programme II"; 250V; AC; 1-POL; IP54	31 24 130		
31	Pressure key "Programme I"; 250V; AC; 1-POL; IP54	31 24 153		
32	Lamp with extinction resistor; 230V; IP54	31 08 116		
33	Pressure switch "ON/OFF" - "H"; 250V; AC; 2-POL; IP54	31 24 185		
34	Hose; DN5 X 1,5	40 01 024		1200 mm; "By-the-metre" goods

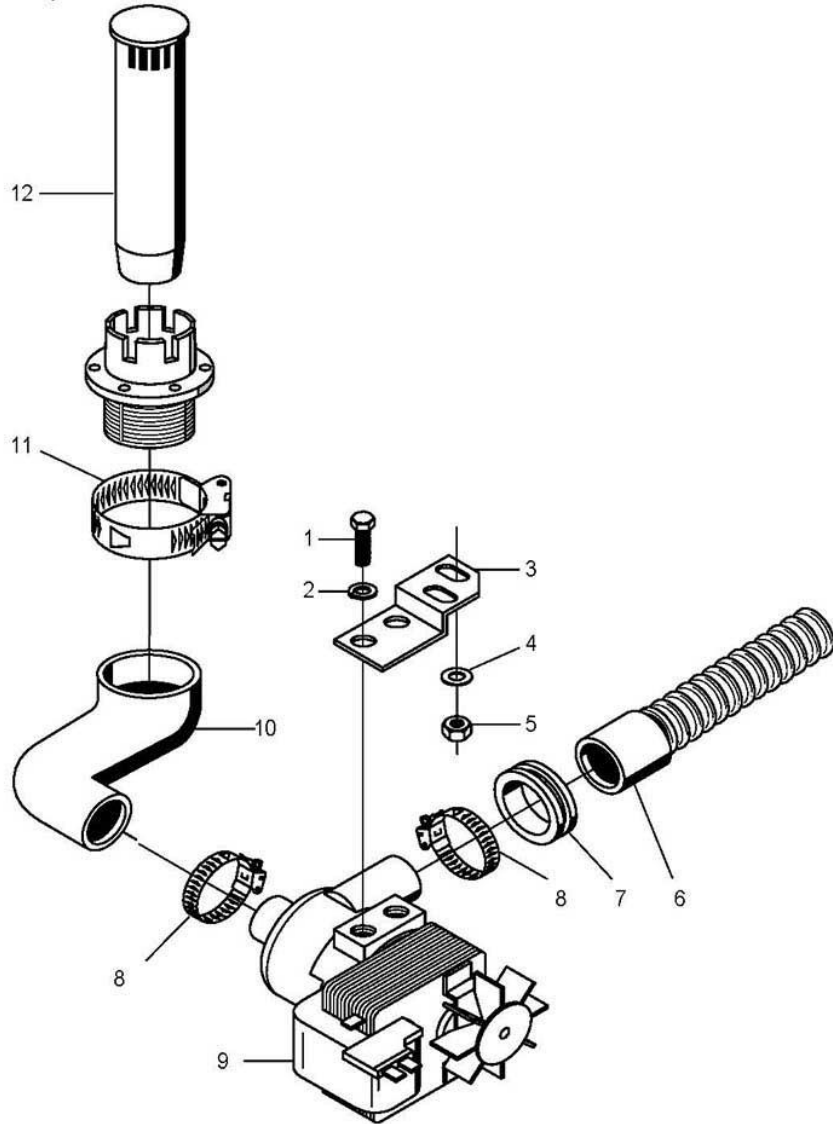
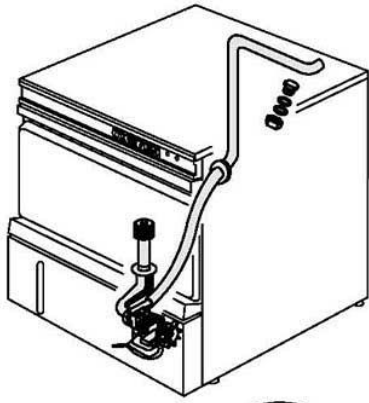


62002308-00

GS 29

Electrical parts II

Item.	Designation	Parts no.:	Pc.	Notes
1	Universal fuse clip	31 09 063	2	
2	Securing plug	31 09 072	2	
3	Fine fuse, medium time lag; 250V; 6,3A; 5 X 20	31 11 043	2	
4	UDK 4-PE double terminal	31 09 153	2	
5	UDK 4 BU double terminal	31 09 152		
6	Isolating disk	31 09 066		
7	UDK 4 double terminal	31 09 151	3	
8	Double terminal, UK, 5-Twin	31 09 115	19	
9	Cover	31 09 177		
o.P.	Fixed bridge; 2-POLIG;	31 09 126		
10	Snap-on rail; 7,5 X 35 X 172	60001733		
11	Cable gland; PG29; 16-25 MM; IP68	31 10 123	2	
12	Cable gland; PG21; 10-18 MM; IP68	31 10 070		
13	Snap-on rail; 7,5 X 35 X 249	62001917		
14	Contacteur A16:3S: 1 N/C contact; 230V/50-60HZ; 7,5KW	31 04 162	3	
14	Contacteur A16:3S: 1 N/C contact; 200V/50-60HZ; 7,5KW	31 04 163	4	Japan
15	Contacteur; A9-3S-1Ö; 230V/50-60HZ; 4KW	31 04 161		
16	Relais box bottom part; 58 X 190 X 350	60001720		
17	Programme switch EPS1.1; 230V/50-60HZ	31 05 131		
17	Programme switch EPS1.1 V2.0; 200V/240V 50-60HZ	31 05 132		
18	Radio interference suppression capacitor; 0,27MF + 2 X 27000PF	31 13 078		
19	Contacteur box cover; 48 X 179 X 351	62001659		
o.P.	Wire assortment dosage time-limited	62002646		tank dosage time-limited
o.P.	Wiping function relay; 220-240V AC,15-300SEC	31 04 150		tank dosage time-limited
o.P.	Set impulse filling	80002133		
o.P.	Clock unit; AC 220-240V	31 04 152		impulse filling
o.P.	Wire assortment pulse controlled filling; 0,75QMM	60002519		impulse filling



62002909-00

GS 29

Drain pump (optional)

Item.	Designation	Parts no.:	Pc.	Notes
1	Hexagon screw; M6 X 16; A70	20 01 306		
2	Spring washer; B6	23 03 300		
3	Bracket; 2,0 X 35 X 94,5	62002803		
4	Washer; D5,3 X D10 X 1,0	22 01 300		
5	Hexagonal nut; M5 SELBSTSICHERND	21 05 302		
6	Drain hose; 1500 LG	40 01 039		
7	Sleeve; 35 X 60 X 10	40 07 014		
8	Hose clamp; D24-36 X 12	28 02 111		
9	Drain pump; 220-240V/50HZ	31 02 010		
10	Reducing elbow; DN24 X DN36	62002804		
11	Hose clamp; D32-52 X 12	28 02 110		
12	Stand pipe; ÜBERLAUFHÖHE 130	62002768		
o.P.	Cable drain pump; 3 X 0,75QMM	62001929		
o.P.	Set drain pump	55 28 159		